



ROHRBACH ASSOCIATES PC
ARCHITECTS

**PUD Submittal to
University Heights**

**Ordinance #208, required
items section 14A.D 12 - 18**

Project:

Courtyard by Marriott
901 Melrose Ave
University Heights, Iowa

Owner

University Lake Partners



Concept Elevation

Courtyard by Marriott
Rohrbach Associates PC
November 2017



ROHRBACH ASSOCIATES PC
ARCHITECTS

**PUD Submittal to
University Heights**

**Ordinance #208, required
items section 14A.D 12 - 18**

Project:

Courtyard by Marriott
901 Melrose Ave
University Heights, Iowa

Owner

University Lake Partners



Concept Elevation

CHOP – ARC Wet Lab Study
Rohrbach Associates PC
June 2017



ROHRBACH ASSOCIATES PC

A R C H I T E C T S

**PUD Submittal to
University Heights**

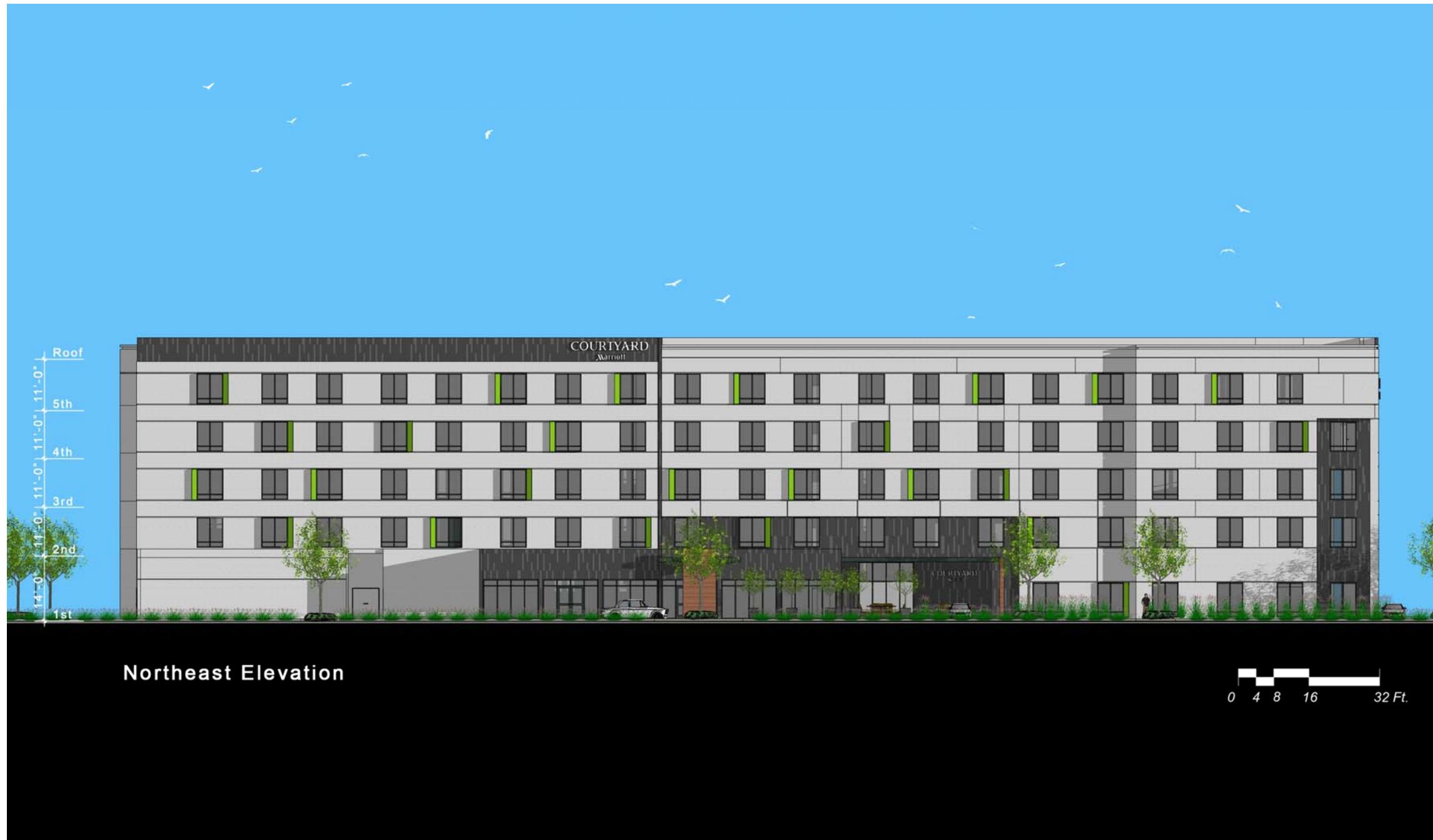
**Ordinance #208, required
items section 14A.D 12 - 18**

Project:

Courtyard by Marriott
901 Melrose Ave
University Heights, Iowa

Owner

University Lake Partners



Concept Elevation

CHOP – ARC Wet Lab Study
Rohrbach Associates PC
June 2017



ROHRBACH ASSOCIATES PC
ARCHITECTS

**PUD Submittal to
University Heights**

**Ordinance #208, required
items section 14A.D 12 - 18**

Project:

Courtyard by Marriott
901 Melrose Ave
University Heights, Iowa

Owner

University Lake Partners



Concept Elevation

CHOP – ARC Wet Lab Study
Rohrbach Associates PC
June 2017



ROHRBACH ASSOCIATES PC

A R C H I T E C T S

**PUD Submittal to
University Heights**

**Ordinance #208, required
items section 14A.D 12 - 18**

Project:

Courtyard by Marriott
901 Melrose Ave
University Heights, Iowa

Owner

University Lake Partners



Concept Design Sketch - View from Northwest

Concept Design Sketch

CHOP – ARC Wet Lab Study
Rohrbach Associates PC
June 2017



ROHRBACH ASSOCIATES PC
ARCHITECTS

**PUD Submittal to
University Heights**

**Ordinance #208, required
items section 14A.D 12 - 18**

Project:

Courtyard by Marriott
901 Melrose Ave
University Heights, Iowa

Owner

University Lake Partners



Concept Design Sketch - View from Southeast

Concept Design Sketch

CHOP – ARC Wet Lab Study
Rohrbach Associates PC
June 2017